



BOIPELO EDITS

LUXURY. CREATIVITY. THERAPY

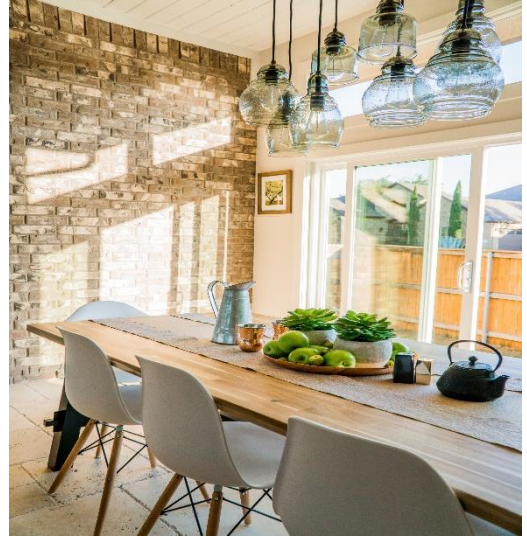
COMPANY PROFILE



Boipelo Edits

Established in 2020, Boipelo Edits is an interior design company, passionate about luxurious, creative and therapeutic space.

In our drive to deliver innovative and practical solutions to our customers, trends have led us to focus on enhancing the services of existing properties, to meet the sophisticated demands of those who associate Boipelo Edits as synonymous for the highest lifestyle



Our forte lies in our hunger for creativity, bringing unique elements to both modern and traditional designs. We aim to forge a strong connection between a client and their desired space.

Our Values

- Transparency
- Accountability

Our service

- Project management
- 3D and 2D modelling
- Fabric and furniture sourcing
- Complete fixture and fitting solutions

Area of expertise

- Residential
- Commercial



HOW WE OPERATE



First Meeting:

- Consultation and management questionnaire.
- Clearly identify clients' needs and objectives,
- Assemble existing plans and draw up existing and the required plans.
- Effective solutions are discussed at this time.

Design Proposal:

- Space planning as per the initial questionnaire and space analysis. Identifying the corporate identity and incorporating this into the design presentation.
- The presentation consists of a personalized design proposal with a sample board and budgetary costs.
- Furniture suggestions to work within your environment Lighting solutions to work with your design, enhancing the final layout
- 3D Renderings and designs to give you an idea of the look and feel of the new offices

Planning Phase:

- Quotation for the implementation of the project.
- Each phase of the construction is monitored ensuring that the client is kept informed and up to date at all times.

Move Management

- Managing the move from the current premises or space, to the new location or area

Handover:

- Complete site to client



Director: Boipelo Sibanyoni
boipeloedits@gmail.com
072-400-6803



